



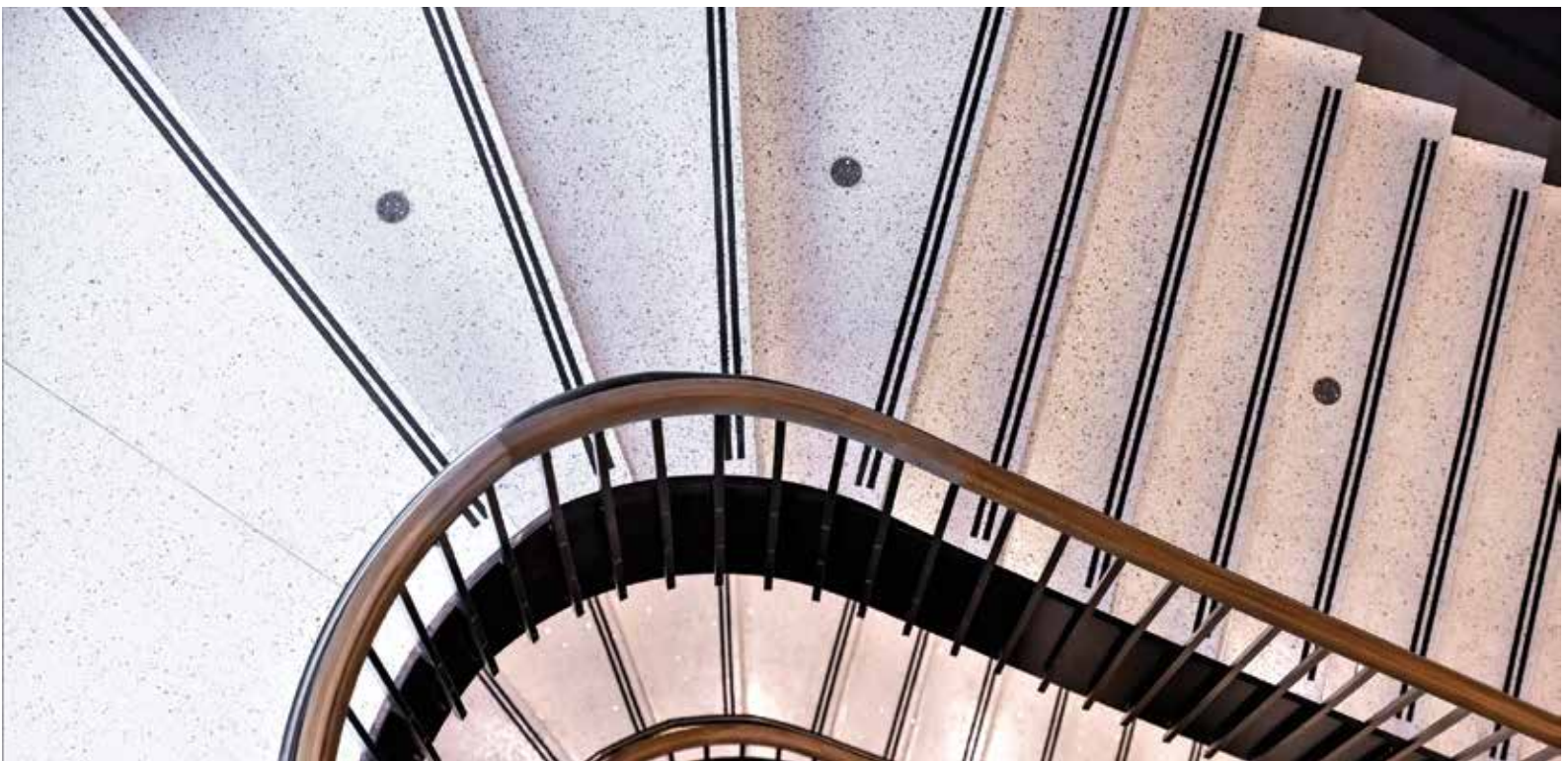
2022

# HONOR AWARDS



THE NATIONAL  
**TERRAZZO**  
& MOSAIC ASSOCIATION





## University of Minnesota Pillsbury Hall • Minneapolis, MN

Three subtle shades of terrazzo distinguish functional zones in this renovation of an 1889 building. Light-reflecting classic white was specified in the central corridor and the poured-in-place open elliptical staircase, with mirror and glass aggregate for dimension. Much of the terrazzo in the main halls was installed over the original heavy timber-framed floors, so the undulating substrate was reinforced and care was taken to factor in deflection limits and floor leveling. With its arches and patterns, the hall has been called “the best remaining example of 19th-century architecture on the campus.”

### Architect

Architecture Advantage  
St. Paul, MN

### Terrazzo Contractor

Advance Terrazzo & Tile Co. Inc.  
Coon Rapids, MN

### General Contractor

JE Dunn Construction  
Minneapolis, MN

### Owner

University of Minnesota  
Minneapolis, MN

### Resin Supplier

Sherwin-Williams Company

### Aggregate Supplier

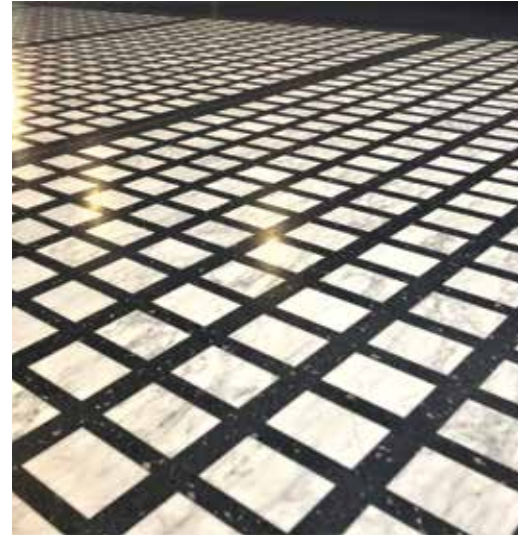
Klein and Company

### Divider Strip Supplier

Manhattan American Terrazzo  
Strip Co.

### Photographer

Farm Kid Studios



## 800 West Fulton, Chicago, Illinois

### Architect

Nelson  
Atlanta, GA

### Aggregate Suppliers

Terrazzo & Marble Supply  
Companies

### Terrazzo Contractor

Williams Tile and Marble Co., Inc.  
Smyrna, GA

### Divider Strip Supplier

Manhattan American Terrazzo  
Strip Co.  
National Metal Shapes, Inc.

### General Contractor

Merit Construction  
Atlanta, GA

### Photographer

Brad Hedges

### Owner

Grubb Properties  
Charlotte, NC

### Resin Supplier

Terrazzo & Marble Supply  
Companies

The well-executed terrazzo installation in this warm, appealing office space replaced slate tile flooring as part of a LEED-certified interior remodel. Large-format porcelain tile was originally specified. An upgrade to seamless epoxy was nearly as cost-effective, with far superior durability and ease of maintenance, and provided a precise match of the design intent. Blended with glass, mirror, and mother-of-pearl aggregate, the colors were also customized to coordinate with other finishes. A final polish with 200-grit made for a lustrous matte sheen.



## Fort McDowell Casino • Fort McDowell, AZ

This engaging design in epoxy terrazzo, with nine striking colors and sparkling with glass and mirror aggregate, tells the stories of the local indigenous peoples through traditional basket patterns. It also represents the harsh beauty of the desert, with fire, water, and earth motifs, and a terrazzo river winding through this new casino. A composition of concentric circles representing Montezuma's Wall, an ancient natural spring central to the Yavapai Creation Story, is the installation's focal point. The terrazzo craftsmen worked closely with the design team to refine the original drawings for the terrazzo divider strip layout.

### Architect

Thalden Boyd Architects  
Olivette, MO

### Designer/Artist n/a

### Terrazzo Contractor

Advance Terrazzo Company  
Phoenix, AZ

### General Contractor

Kitchell Contractors, Inc. of  
Arizona  
Phoenix, AZ

### Owner

Fort McDowell Yavapai Nation  
Fort McDowell, AZ

### Resin Supplier

Key Resin Company

### Aggregate Supplier

Continental Terrazzo Supply

### Divider Strip Supplier

Manhattan American Terrazzo  
Strip Co.

### Photographer

PT Design



## The Artisan at Essex Crossing • New York, NY

### Architect

Handel Architects, LLP  
New York, NY

### Terrazzo Contractor

Imperial Flooring Systems, Inc.  
Freehold, NJ

### General Contractor

Consigli & Associates, LLC  
New York, NY

### Owner

Site 4 DSA Owner LLC  
Larchmont, NY

### Resin Supplier

Key Resin Company

### Aggregate Suppliers

Arim-Inc.  
Terrazzo & Marble Supply  
Companies

### Precast Supplier

Angelozzi Precast Terrazzo  
Products

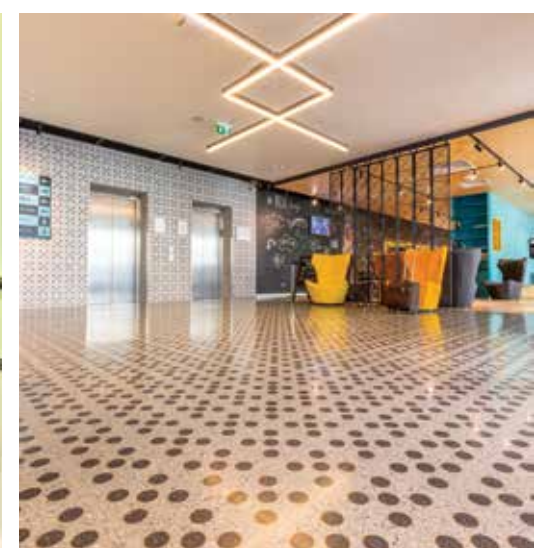
### Divider Strip Supplier

Manhattan American Terrazzo  
Strip Company

### Photographer

Jon Lattin

This elegant space is part of a major new mixed-income housing and commercial redevelopment project on Manhattan's Lower East Side. A restrained, mosaic-style Palladiana pattern compliments the commercial lobby space. Suzuko marble was waterjet-cut in alternating rectangles and attached to a mesh layout, then in-filled with micro-aggregate epoxy. The simpler residential lobby is distinguished by a sleek graphite epoxy with marble and glass aggregate, designed to complement other finishes. With a lustrous finish, the floors are set level with the sidewalk to obscure the boundaries of interior and exterior.



## Hotel Ibis City Center • Bucharest, Romania

This innovative use of terrazzo begins with four classic colors installed in three distinct areas of this new hotel. The reception area's richly textured marble aggregate mix includes 25-30 percent of number three chips and five percent of number four. In the lobby, the terrazzo craftsmen drew by hand a 500-square-foot grid for the precise hand-placement of the 8,000 brass rings in the floor. The epoxy was then poured in and around the two-inch-diameter rings. The pattern continues - the colors inverted - into the elevator cabs with precast terrazzo elements.

### Architect

Arhi-Grup S.R.L.  
Bucharest, Romania

### Terrazzo Contractor

Aragon  
Bucharest, Romania

### General Contractor

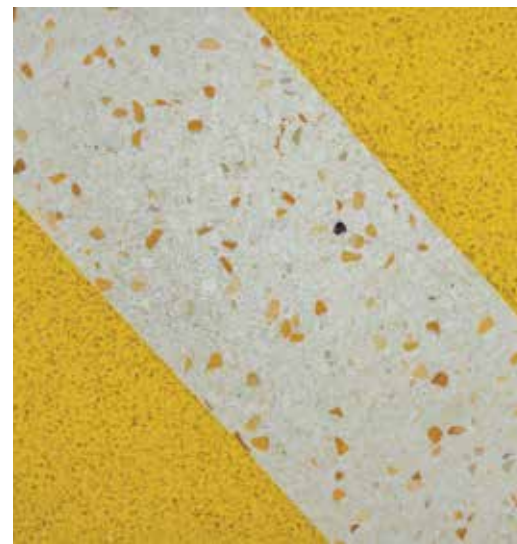
BTD Construct S.R.L.  
Bucharest, Romania

### Owner

Dentotal Hospitality S.R.L.  
Bucharest, Romania

### Photographer

Cristian Vasile



## Hotel Ibis Erbas • Bucharest, Romania

### Architect

DA-AC Studio  
Bucharest, Romania

### Owner

Constructii Erbasu SA  
Bucharest, Romania

### Terrazzo Contractor

Aragon  
Bucharest, Romania

### Photographer

Cristian Vasile

### General Contractor

Constructii Erbasu SA  
Bucharest, Romania

Bold colors and dramatic lines play leading roles in conveying the extraordinary “in-construction-industrial” design intent of this newly renovated lobby, bar, and restaurant. Dividers strips in zinc were used sparingly on this floor, only for delineating main areas and for fulfilling expansion requirements, but not between the colors. The vivid epoxy tones are blended with transparent glass chips for brightness and depth and polished to a 3,000-grit finish. The aggregate mix achieves its pleasing texture by the addition of five percent number four marble chips and 25-30 percent number three.





## The Shoppes at Bayshore • Tampa, FL

Inspired by the beach, this inviting, LEED-certified flagship store is on the top floor of Tampa International Airport. The epoxy terrazzo's nicely flowing pattern, reflected in the ceiling, will provide long-term durability for a high-traffic location. Six intense colors evoke different shades of the ocean and the sandy beach. The iridescent aggregate mix, brightened with clear and mirror glass, mother-of-pearl, and white marble, is consistent over several colors to unify the color palette. The terrazzo contractor employed a template system to transfer the aluminum strip pattern to the substrate.

### Architect

ID & Design International  
Ft. Lauderdale, FL

### Terrazzo Contractor

Steward Mellon Company  
Tampa, FL

### General Contractor

DS Jordan Construction  
Miami, FL

### Owner

NewsLink  
Miami, FL

### Resin Supplier

Terrazzo & Marble Supply  
Companies

### Aggregate Suppliers

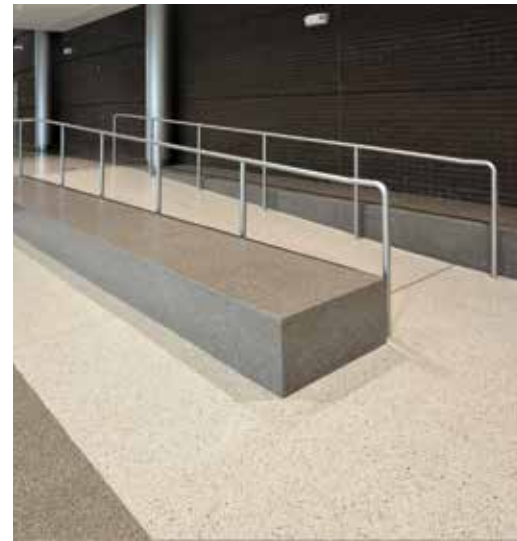
Terrazzo & Marble Supply Companies

### Divider Strip Supplier

Terrazzo & Marble Supply  
Companies

### Photographer

Brad Hedges



## Eureka High School STEM Addition • Eureka, MO

### Architect

Dickinson Hussman Architects  
St. Louis, MO

### Terrazzo Contractor

Missouri Terrazzo  
St. Louis, MO

### General Contractor

K&S Associates, Inc.  
St. Louis, MO

### Owner

Rockwood School District  
Eureka, MO

### Resin Supplier

Terrazzo & Marble Supply  
Companies

### Aggregate Suppliers

Terrazzo & Marble Supply  
Companies

### Precast Supplier

Wausau Tile

### Divider Strip Supplier

Manhattan American Terrazzo  
Strip Company

### Photographer

Viken Djaferian-FotoGrafix

This welcoming new STEM addition on this 112-year-old campus comprises clean lines, and a crisply patterned epoxy terrazzo floor. The classic terrazzo design in four muted tones with glass and marble aggregate and aluminum divider strips showcases the Wildcat mascot in school colors. The most technically demanding elements of this eye-catching installation were the well-executed poured-in-place handicapped accessible ramp, the short walls, and 20-foot-long tread and risers. The entire area was troweled, ground, grouted, and polished by hand.



## The Higgins Hotel New Orleans • New Orleans, LA

This new hotel is the official hotel and extension of The National WWII Museum, and will feature its own artifact displays. This striking and timeless epoxy thin-set terrazzo floor in seven colors conveys the glamour of the era and achieves the design intent, as it defines areas and creates a sense of place. A sophisticated ambiance is achieved through an artful combination of Art Deco-inspired design details, colors, and patterning in brass, alternating with appropriate simplicity.

### Architect

Nichols Brosch Wurst Wolfe & Associates  
Coral Gables, FL

### Designer

Kay Lang + Associates  
Los Angeles, CA

### Terrazzo Contractor

Terrazzo Masters  
Metairie, LA

### General Contractor

Palmisano, LLC  
New Orleans, LA

### Owner

World War II Theatre, Inc.  
New Orleans, LA

### Resin Supplier

Terrazzo & Marble Supply  
Companies

### Aggregate Suppliers

Terrazzo & Marble Supply  
Companies

### Divider Strip Supplier

Manhattan American Terrazzo  
Strip Company

### Photographer

David Laudadio



## Ayersville PK-12 School • Defiance, OH

**Architect**

Garmann-Miller  
Minster, OH

**Resin Supplier**

Terrazzo & Marble Supply  
Companies

**Terrazzo Contractor**

Anese Masonry  
Tiffin, OH

**Aggregate Supplier**

Terrazzo & Marble Supply  
Companies

**General Contractor**

Shook Touchstone  
Lima, OH

**Divider Strip Supplier**

National Metal Shapes

**Owner**

Ayersville Local School District  
Defiance, OH

**Photographer**

David Laudadio

This new LEED-certified school is the district's only school, accommodating 750 K-12 students. Following the theme of the school mascot, the Pilots, epoxy thin-set terrazzo animates the corridors and first-floor commons area that separates the lower and upper grades and serves as an auditorium. Lively designs in seven fresh colors with 100 percent glass aggregate proudly communicate the school's identity, incorporating the school colors and logo. Bringing interest to the larger spaces, the design also reflects mindfulness of the scale of elements in the hall while providing wayfinding cues.



## “Judges Choice” Renovation \* Our Lady of Loreto Catholic Parish • Foxfield, CO

Epoxy terrazzo was patterned to replicate and replace beautiful custom carpet runners in the aisles of this handsome church. The church had been spending \$100,000 every 15 years to replace the carpet. The terrazzo contractor worked directly with church representatives to plan the installation. Starting from an old CAD file of the runners, the contractor replicated their patterns in terrazzo and precisely matched the deep colors. The strip pattern was waterjet-cut and welded to 18 four-by-five-foot wire mesh sheets. The field color replaced old tile. The light-reflecting result is not only warm and elegant but also low maintenance and permanent.

**Terrazzo Contractor**  
Colorado Design Inc. Tile and  
Terrazzo  
Denver, CO

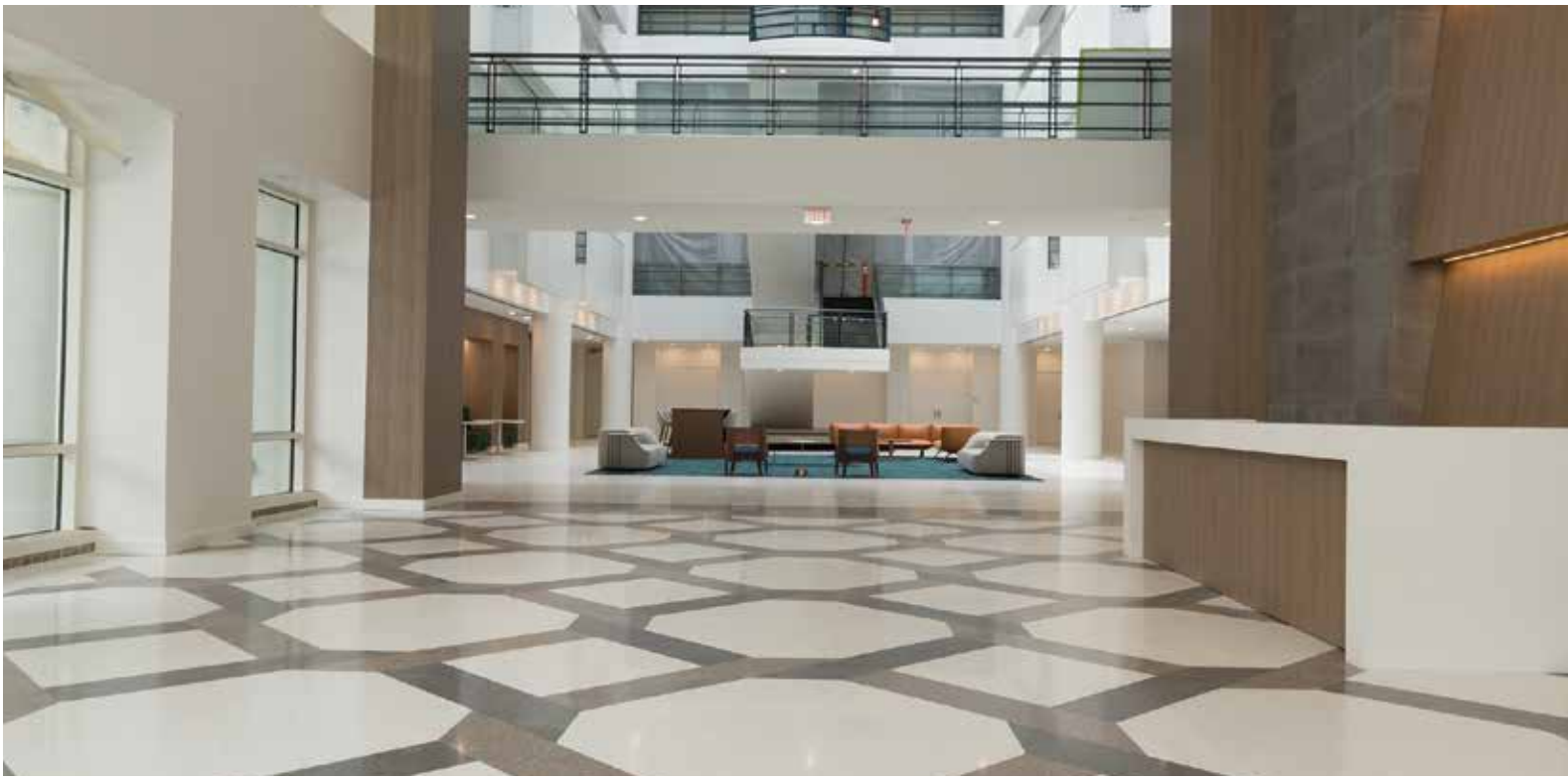
**Owner**  
Our Lady of Loreto Catholic  
Parish  
Foxfield, CO

**Resin Supplier**  
Terrazzo & Marble Supply  
Companies

**Aggregate Suppliers**  
Terrazzo & Marble Supply  
Companies

**Divider Strip Supplier**  
Manhattan American Terrazzo  
Strip Company

**Photographer**  
David Laudadio



## 5995 Windward Parkway • Alpharetta, GA

Architect  
Nelson  
Atlanta, GA

Terrazzo Contractor  
Williams Tile and Marble Co.,  
Inc.  
Smyrna, GA

General Contractor  
Merit Construction  
Atlanta, GA

Owner  
Grubb Properties  
Charlotte, NC

Resin Supplier  
Terrazzo & Marble Supply

### Companies

Aggregate Suppliers  
Terrazzo & Marble Supply  
Companies

Divider Strip Supplier  
Manhattan American Terrazzo  
Strip Co.  
National Metal Shapes, Inc.

Photographer  
Brad Hedges

The well-executed terrazzo installation in this warm, appealing office space replaced slate tile flooring as part of a LEED-certified interior remodel. Large-format porcelain tile was originally specified. An upgrade to seamless epoxy was nearly as cost-effective, with far superior durability and ease of maintenance, and provided a precise match of the design intent. Blended with glass, mirror, and mother-of-pearl aggregate, the colors were also customized to coordinate with other finishes. A final polish with 200-grit made for a lustrous matte sheen.



## Millo Office Building-Downtown • Bucharest, Romania

The elegant simplicity of this thoughtful interior design is well suited to the architecture. Showcasing 1,700 linear feet of brass detailing and divider strip, this epoxy terrazzo installation throughout the common areas is the focal point of the modern interior. Both cream and medium gray resin are blended with a single unifying aggregate mix, gorgeously accented with larger marble chips. Mitering of the brass strip work is elegantly and artistically crafted. Monolithic restroom countertops were precast to appear sculpted like stone out of single terrazzo blocks. Exceptional attention to detail is evident throughout the project.

**Architect**  
ADNBA Birou Arhitectura  
Bucharest, Romania

**Terrazzo Contractor**  
Aragon  
Bucharest, Romania

**General Contractor**  
Heberger Constructii S.R.L.  
Bucharest, Romania

**Owner**  
Forte Partners  
Bucharest, Romania

**Photographer**  
Cristian Vasile



## “Judges Choice” Art • Phoenix Sky Harbor Airport – Sky Train • Phoenix, AZ

### Architect

SmithGroup  
Phoenix, AZ

### Artist this page

Frank Gonzales  
Mesa, AZ

### Terrazzo Contractor

Advance Terrazzo Company  
Phoenix, AZ

### General Contractor

Hensel Phelps Construction Co.  
Phoenix, AZ

### Owner

Phoenix Aviation Department  
Phoenix Office of Arts & Culture  
Public Art Program

### Resin Supplier

Key Resin Company

### Aggregate Supplier

Continental Terrazzo Supply

### Precast Supplier

Precast Terrazzo Enterprises

### Divider Strip Supplier

Manhattan American Terrazzo  
Strip Co.

### Photographer

PT Design

Commissioned by the city’s Public Art Program, these masterpieces of durable, low-maintenance public art are part of the airport museum’s permanent collection. Displayed on elevated train station platforms, these installations in epoxy terrazzo were included in a LEED Gold-certified development project. The rental car train design was inspired by the concept of earthbound creatures taking to the sky, while the 24th Street station design pays homage to indigenous peoples and the healing elements of the desert. Providing innovative color solutions, the terrazzo artisans preserved the integrity of each designer’s artistic vision.





## “Judges Choice” Art • Phoenix Sky Harbor Airport – Sky Train • Phoenix, AZ

Commissioned by the city’s Public Art Program, these masterpieces of durable, low-maintenance public art are part of the airport museum’s permanent collection. Displayed on elevated train station platforms, these installations in epoxy terrazzo were included in a LEED Gold-certified development project. The rental car train design was inspired by the concept of earthbound creatures taking to the sky, while the 24th Street station design pays homage to indigenous peoples and the healing elements of the desert. Providing innovative color solutions, the terrazzo artisans preserved the integrity of each designer’s artistic vision.

### Architect

SmithGroup  
Phoenix, AZ

### Artist this page

Bill Dambrova  
Phoenix, AZ

### Terrazzo Contractor

Advance Terrazzo Company  
Phoenix, AZ

### General Contractor

Hensel Phelps Construction Co.  
Phoenix, AZ

### Owner

Phoenix Aviation Department  
Phoenix Office of Arts & Culture  
Public Art Program

### Resin Supplier

Key Resin Company

### Aggregate Supplier

Continental Terrazzo Supply

### Precast Supplier

Precast Terrazzo Enterprises

### Divider Strip Supplier

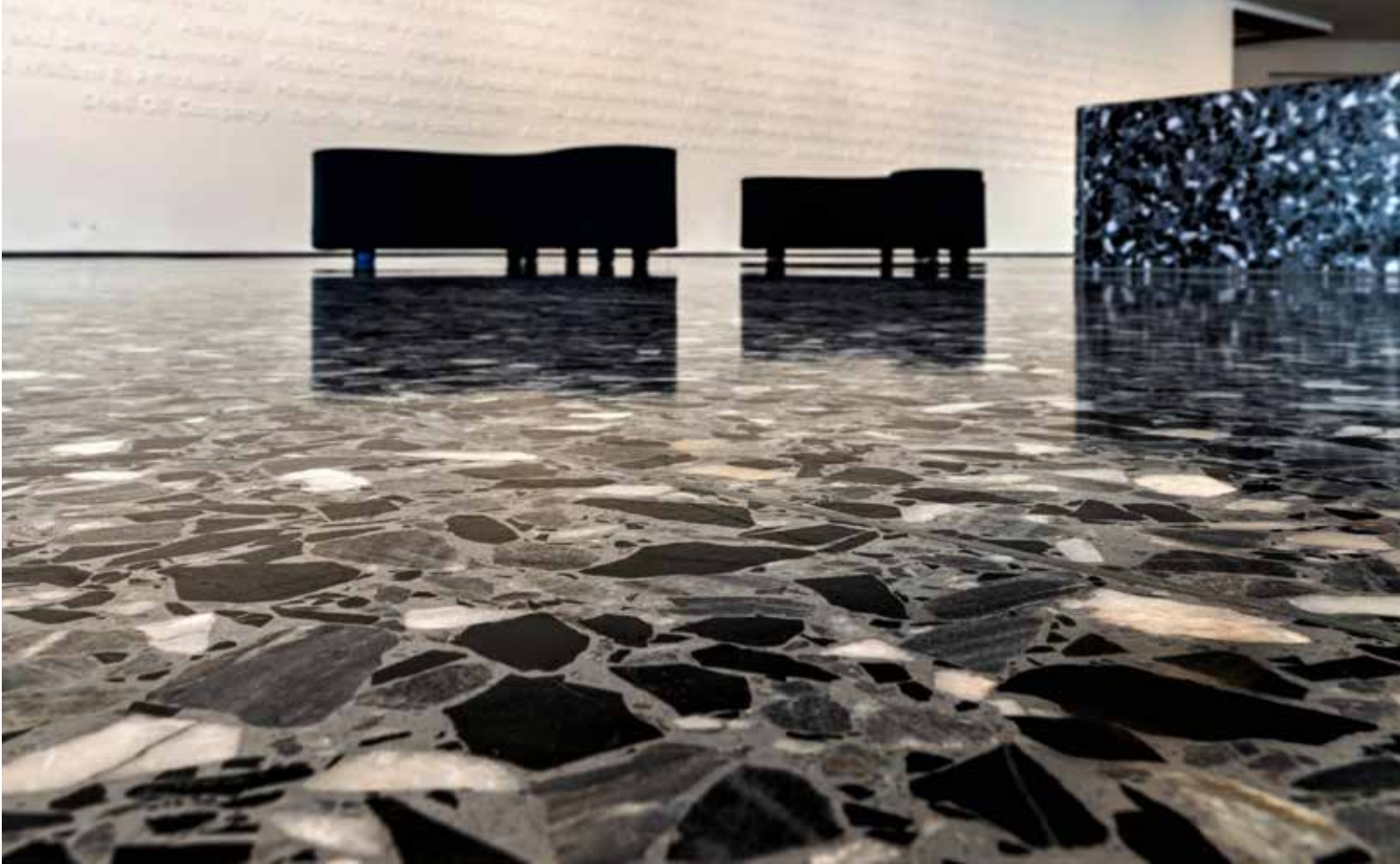
Manhattan American Terrazzo  
Strip Co.

### Photographer

PT Design

# 2022 JOB OF THE YEAR

Museum of Fine Arts Houston, Nancy & Rich Kinde Building • Houston, TX



The opening of the new Nancy and Rich Kinder Building late in 2020 concluded an eight-year museum redevelopment project. With a striking design and impressive scope, this masterful terrazzo project comprises over 52,000 square feet of traditional sand-cushion, cementitious terrazzo. The centerpiece of the museum complex, the new gallery contains 45,500 square feet of Venetian terrazzo in size 4-7 aggregate. The architect's objective in this gallery was to respond to green terrazzo installed in the museum by the contractor's grandfather some 65 years before. This historic installation, which is in excellent condition and still looks brand new, was

replicated in a transitional lobby space. In the rest of the gallery, a complementary blue-gray color was specified. From the lower level, a precast cementitious terrazzo stairway begins with a raised seating platform. Leading to the intermediate level and the main floor is a precast staircase with three poured-in-place landings. The main floor revolves around a poured-in-place suspended staircase with 41 steps of varying lengths and widths set on a plinth. In a tunnel connecting the gallery to another part of the complex, 4000 square feet of sand-cushion, white terrazzo with finer aggregates strikes a contrasting note.



**Architect**

Steven Holl Architects  
New York, NY

**Associate Architect**

Kendall/Heaton Associates, Inc.  
Houston, TX

**Terrazzo Contractor**

Southern Tile & Terrazzo Co., Inc.  
Houston, TX

**General Contractor**

McCarthy Building Companies, Inc.  
Houston, TX

**Owner**

Museum of Fine Arts, Houston  
Houston, TX

**Aggregate Suppliers**

Cactus Canyon Quarries  
Terrazzo & Marble Supply Companies

**Precast Supplier**

Precast Terrazzo Enterprises

**Divider Strip Supplier**

Manhattan American Terrazzo Strip Company

**Photographer**

Jaime Leigh Sonnier-Casa de Camera



NATIONAL TERRAZZO AND MOSAIC ASSOCIATION

---

800.323.9736 [INFO@NTMA.COM](mailto:INFO@NTMA.COM)