



2023

# HONOR AWARDS



THE NATIONAL  
**TERRAZZO**  
& MOSAIC ASSOCIATION





## Will Rogers World Airport • Oklahoma City, OK

Integrating permanent, durable public art into the terminal expansion, the 32-color epoxy terrazzo floors tell the story of the state. The pre-TSA lobby's floor patterns depict Oklahoma's Native American roots and the 1889 Land Rush in a soothing palette with tones of red prairie dirt. Eight vibrant graphic medallions guide travelers post-TSA; the images celebrate local culture with tributes to folk hero Will Rogers, 39 Native American tribes, the Oklahoma City National Memorial, and main industries: oil and gas, biotech, aerospace, and agriculture. The gleaming benches are handcrafted, poured-in-place terrazzo. All metal divider strips and designs were crafted by the contractor.

**Architect**  
FSB Architects  
Oklahoma City, OK

**Artist**  
Matt Goad  
Oklahoma City, OK

**Terrazzo Contractor**  
David Allen Company  
Raleigh, NC

**General Contractor**  
Timberlake Construction  
Oklahoma City, OK

**Owner**  
Oklahoma City Airport Trust  
Oklahoma City, OK

**Resin Supplier**  
Terrazzo & Marble Supply Companies

**Aggregate Suppliers**  
Arim-Inc.  
Southern Aggregates  
Terrazzo & Marble Supply Companies

**Precast Supplier**  
Wausau Tile

**Divider Strip Supplier**  
Manhattan American Terrazzo Strip Co.

**Photographer**  
David Laudadio



## Allen Center II/III • Houston, TX

### Architect

Morrison Dilworth + Walls  
Dallas, TX

### Designer/Artist

PDR Interior Design  
Houston, TX

### Terrazzo Contractor

Southern Tile & Terrazzo Co., Inc.  
Houston, TX

### General Contractor

Tellepsen Builders, L.P.  
Houston, TX

### Owner

Brookfield Properties  
Houston, TX

### Resin Supplier

Terrazzo & Marble Supply Companies

### Aggregate Suppliers

Cactus Canyon Quarries  
Continental Terrazzo Supply  
Enviroglas Products

### Divider Strip Supplier

Manhattan American Terrazzo Strip Co.

### Photographer

Tour-Factory Photography Specialist

Twin 40-year-old office towers—a 3.2 million square foot office complex—were redeveloped, with a new bridge connecting them, to produce this refined mixed-use workplace destination with a hotel and other amenities. Seamless, durable, and easily maintained, epoxy terrazzo, in three well-chosen colors was installed over existing travertine stone for a luminous contemporary interior with an open flow. The sumptuous, meticulously detailed installation includes five new staircases clad with terrazzo and seven elevator lobbies, while a rustic bonded terrazzo system updates the exterior plaza. The complex remained accessible to tenants throughout the installation.



## Agua Caliente Casino & Spa/Museum • Palm Springs, CA

Traditional basket designs—a central element of the heritage of the Agua Caliente Band of Cahuilla Indians—are artfully woven into these epoxy terrazzo floors in three tribal reservation properties. The geometric medallions honor ancestral lands and culture, exemplifying how powerfully design and color in a floor can impact a space. Natural, neutral tones create a calming environment that recalls the surrounding desert landscape while enhancing and complementing the circular patterns and curves of other finishes. Precast terrazzo elements combined with poured-in-place sections are incorporated seamlessly with minimal divider strips.

### Architect

JCJ  
Los Angeles, CA

### Terrazzo Contractor

CORRADINI Corp.  
Costa Mesa, CA

### General Contractor

The Penta Building Group, LLC  
Las Vegas, NV

### Owner

Agua Caliente Band of Cahuilla Indians  
Palm Springs, CA

### Resin Supplier

Terrazzo & Marble Supply Companies

### Aggregate Suppliers

Terrazzo & Marble Supply Companies  
Southern Aggregates

### Divider Strip Supplier

Manhattan American Terrazzo Strip Co.

### Photographer

Lauren Corradini



## Deutsche Bank • New York, NY

### Architect

Gensler  
New York, NY

### Terrazzo Contractor

Zonca Terrazzo & Mosaic LLC  
Armonk, NY

### General Contractor

Structure Tone  
New York, NY

### Owner

Deutsche Bank  
New York, NY

### Resin Supplier

Master Terrazzo Technologies

### Aggregate Supplier

Arim-Inc.

### Precast Supplier

Precast Terrazzo Enterprises

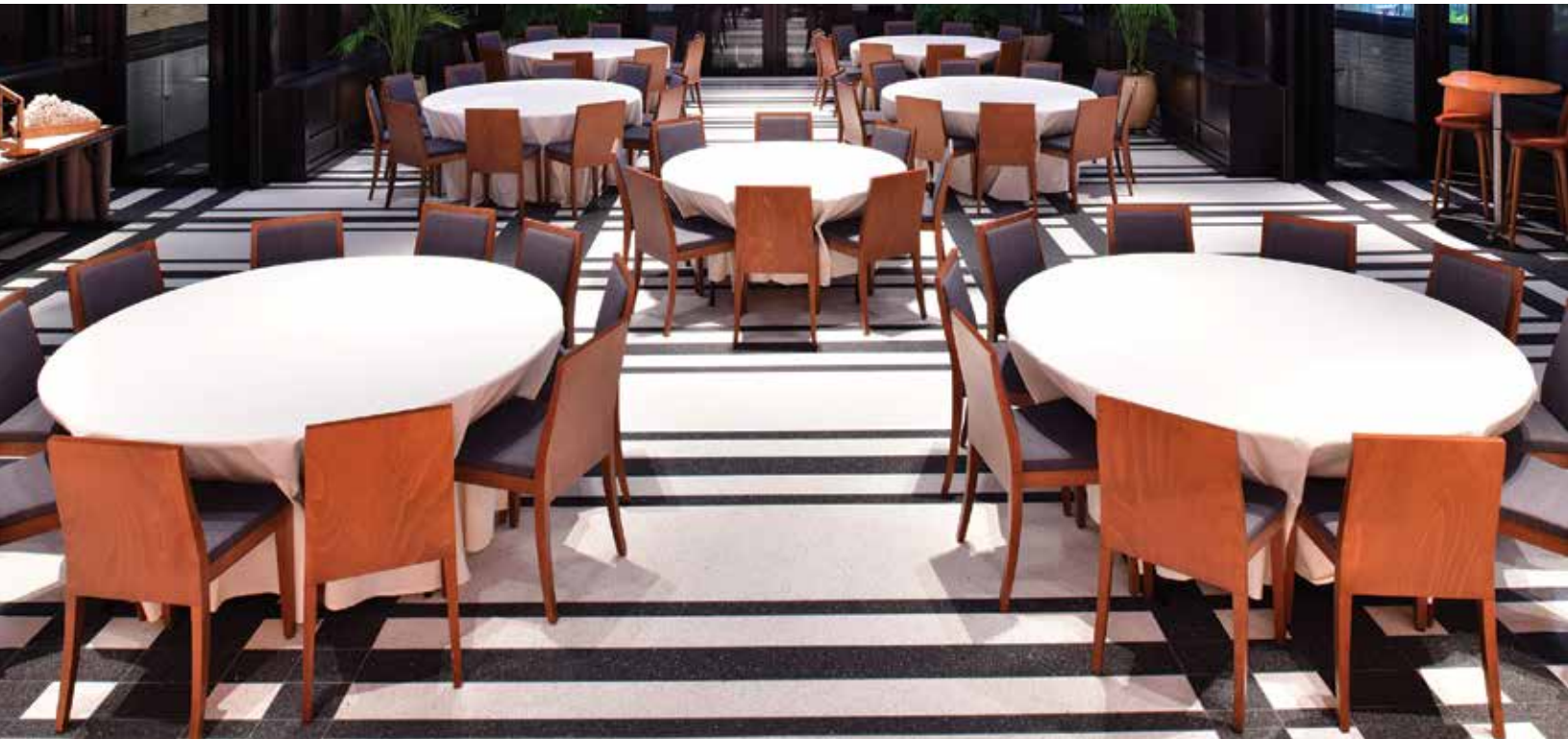
### Divider Strip Supplier

Manhattan American Terrazzo Strip Co.

### Photographer

© Rafael Gamo, courtesy of Gensler

Seamless and durable, terrazzo was installed in the public spaces during the remodel of this landmark building. The interior was designed to elevate the corporate brand and provide a state-of-the-art trading environment, providing a premier employee and client experience. At 90,000 square feet, this elegant installation is considered the city's largest Venetian epoxy terrazzo application. The diamond pattern layout mirrors the ceilings and architectural curves, all used to advantage in the sky lobby, reception areas, client-facing spaces, and work cafés. Removable matching precast terrazzo panels on food service stations allow access to gas and water valves.



## Shinola Hotel • Detroit, MI

This new boutique resort complex unites two restored historic buildings—a sporting goods and hardware store and a former Singer sewing machine store—with three new buildings modeled after downtown Detroit’s historic architecture. This gorgeous floor in a glass-enclosed rooftop restaurant defines the retro space with its sleek zinc strip layout and winsome 1920s black-tie and top-hat vibe. Crisp and saturated, the epoxy terrazzo design is packed with narrow accent bands in varying sizes, all poured-in-place. Special care was taken to conceal expansion joints while accounting for thermal expansion in the floor.

**Architect**

Kraemer Design Group  
Detroit, MI

**Designer/Artist**

Gachot  
New York, NY

**Terrazzo Contractor**

Michielutti Bros.  
Eastpointe, MI

**General Contractors**

Barton Marlow  
Southfield, MI

**Owner**

Bedrock Real Estate Services  
Detroit, MI

**Resin Suppliers**

Master Terrazzo Technologies  
Terrazzo & Marble Supply Companies

**Aggregate Suppliers**

Klein & Company  
Terrazzo & Marble Supply Companies

**Divider Strip Supplier**

National Metal Shapes

**Photographer**

David Laudadio



## University of San Diego – Knauss & Olin Hall • San Diego, CA

### Architect

Delawie  
San Diego, CA

### Terrazzo Contractor

T.B. Penick & Sons  
San Diego, CA

### General Contractor

Level 10 Construction  
Sunnyvale, CA

### Owner

University of San Diego  
San Diego, CA

### Resin Supplier

Terrazzo & Marble Supply Companies

### Aggregate Supplier

Terrazzo & Marble Supply Companies

### Precast Supplier

Wausau Tile

### Divider Strip Suppliers

Manhattan American Terrazzo Strip Co.  
Terrazzo & Marble Supply Companies

### Photographer

Nathan Padilla Bowen

New construction and a remodel brought all school of business functions into one engaging, interactive, flexible, and social complex. This handsome, two-toned epoxy terrazzo installation focuses on an exquisite 16th-century Spanish Renaissance-style geometric motif. The appealing pattern in brass inlay amplifies the atrium and entrances, while a simple linear strip pattern enhances the views across corridors. An understated design that accomplishes a great deal with two colors, the well-executed project specified resilient terrazzo finishes on the base, in elevator cabs, and on interior stairs in precast epoxy and exterior stairs in cement terrazzo.





## Polish Heritage Center • Panna Maria, TX

Honoring the rich heritage of the oldest permanent Polish settlement in the US, this museum greets visitors with a vibrant nine-foot terrazzo medallion at the entry. The complex pattern incorporates 20 rich epoxy colors for high visual impact, while a simple one-color field applied throughout the rotunda, gallery spaces, and restrooms balances the costs. The project was funded by donations from the local community, and after multiple conferences with design and construction teams through an interpreter, by the Polish government. Terrazzo was specified for its design capabilities, ease of maintenance, and durability.

### Architect

Morkovsky + Associates, Inc.  
San Antonio, TX

### Designer/Artist

Steve Harding Design, Inc.  
Galveston, TX

### Terrazzo Contractor

Venice Art Terrazzo Co., Inc.  
San Antonio, TX

### General Contractor

Keller-Martin Construction Company  
San Antonio, TX

### Owner

Polish Heritage Center at Panna Maria  
Foundation  
Panna Maria, TX

### Resin Supplier

Key Resin Company

### Aggregate Suppliers

Cactus Canyon Quarries  
Continental Terrazzo Supply

### Divider Strip Supplier

Manhattan American Terrazzo Strip Co.

### Photographer

Anna Migeon



## Johnson County Courthouse • Olathe, KS

### Architect

Treanor Architects  
Kansas City, MO

### Terrazzo Contractor

DESCO Coatings  
Olathe, KS

### General Contractor

JE Dunn Construction Co.  
Kansas City, MO

### Owner

Johnson County Courthouse  
Olathe, KS

### Resin Supplier

Terrazzo & Marble Supply Companies

### Aggregate Supplier

Terrazzo & Marble Supply Companies

### Precast Supplier

Wausau Tile

### Divider Strip Supplier

Manhattan American Terrazzo Strip Co.

### Photographer

Tiffany Davis Photography

Designed to accommodate rapid population growth and reduce energy use, this imposing new LEED-certified building was built to serve the county for the next 75 years. A monumental precast staircase in epoxy terrazzo provides a sculptural focal point within the floor's grand expanse in the radiant entry. The state-of-the-art facility's handsome interior design is immaculate and confidently streamlined while evoking a powerful sense of the dignity of the building's purpose. Within a clean zinc divider strip pattern, mother-of-pearl and marble aggregate lend heft and texture to the glossy, durable finish.



## Nido & Mariana Qubein Arena & Conference Center • High Point, NC

A custom compass rose medallion and patterns in epoxy terrazzo respond well to the architecture while tastefully branding the space and serving in wayfinding for the many visitors to this center. Terrazzo was specified to significantly reduce life-cycle costs in this LEED-certified facility. In the concourse, a neutral terrazzo field color is a bright backdrop for the warm-toned graphics while providing durability to withstand heavy foot traffic. The monumental staircase with its sleek curves was poured-in-place. This dynamic installation is an investment that will continue to bring returns, both functionally and aesthetically.

### Architects

CJMW Architecture  
Winston-Salem, NC

Perkins & Will  
Denver, CO

### Terrazzo Contractor

David Allen Company  
Raleigh, NC

### General Contractor

Christman/Samet JV  
Greensboro/Raleigh, NC

### Owner

High Point University  
High Point, NC

### Resin Supplier

Terrazzo & Marble Supply Companies

### Aggregate Suppliers

Arim-Inc.  
Southern Aggregates  
Terrazzo & Marble Supply Companies

### Precast Supplier

Precast Terrazzo Enterprises

### Divider Strip Supplier

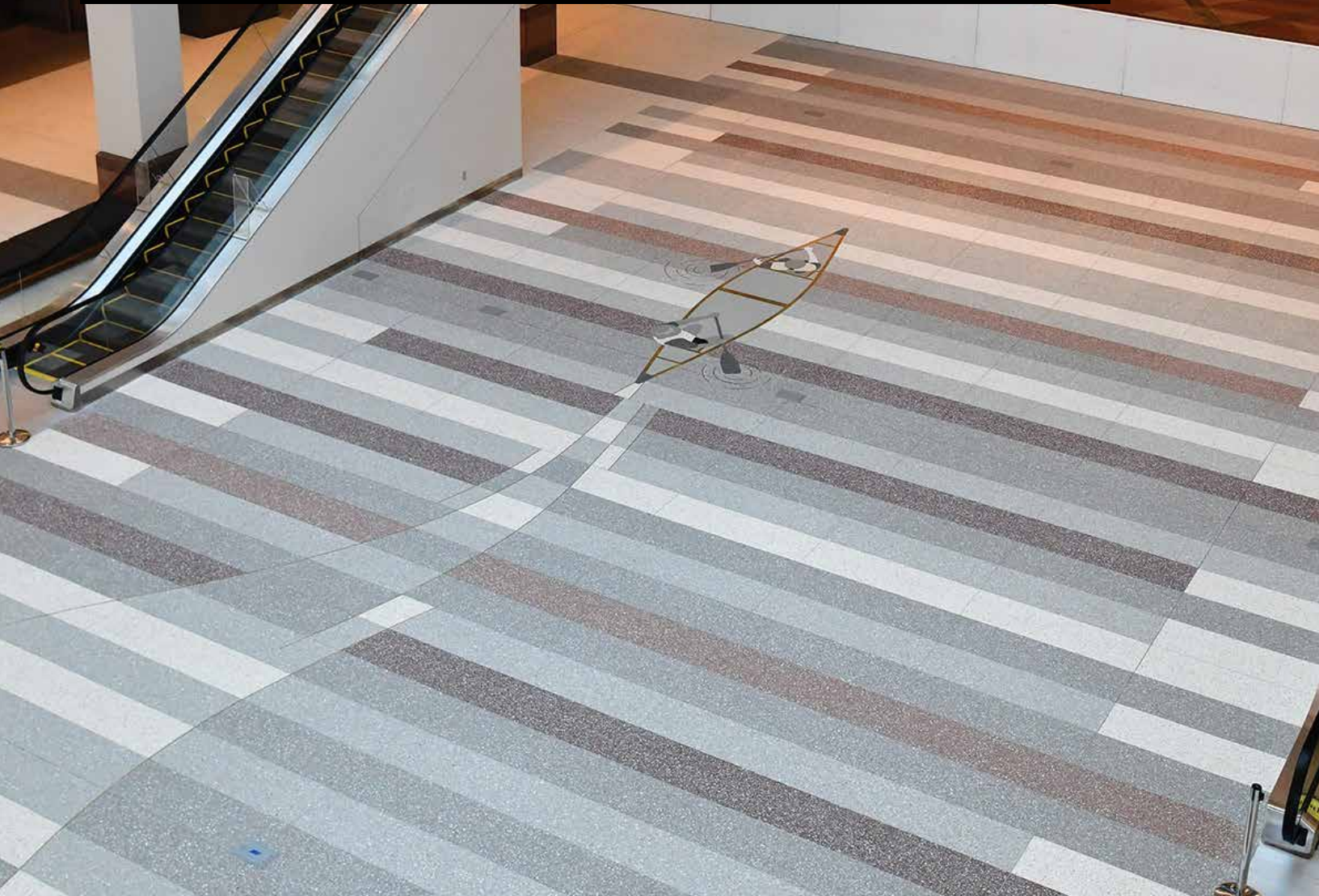
Manhattan American Terrazzo Strip Co.

### Photographer

David Laudadio

# 2023 JOB OF THE YEAR

Minneapolis Convention Center, Minneapolis, Minnesota



To celebrate the state's outdoor attractions and create a sense of place, 10 waterjet-cut, precast art elements in aluminum and brass were set in the floor, and terrazzo was poured-in-place around them. The bird's-eye-view imagery animates the entire facility while the open spaces are enhanced with a field design of varying and interweaving bands. Functioning as an element of the 14-color palette, the brass action lines and terrazzo patterning trace the figures' movement, serving as playful and practical wayfinding aids.

These highly functional floors were designed to meet the challenge of exceptionally heavy traffic and load demands. The facility hosts some 750,000 guests for 400 events each year. The entire project was installed on a one-foot by four-foot grid to facilitate the frequent renovations, remodels, and moving of equipment and outlets required in a convention center.



**Minneapolis Convention Center**  
Minneapolis, MN



**Architect & Designer/Artist**  
Alliance  
Minneapolis, MN

**Terrazzo Contractor**  
Advance Terrazzo & Tile Co., Inc.  
Coon Rapids, MN

**General Contractor**  
Kraus-Anderson Construction  
Minneapolis, MN

**Owner**  
City of Minneapolis  
Minneapolis, MN

**Resin Supplier**  
Terrazzo & Marble Supply Companies

**Aggregate Suppliers**  
Terrazzo & Marble Supply Companies  
United Terrazzo

**Divider Strip Supplier**  
Manhattan American Terrazzo Strip Co.

**Photographer**  
David Laudadio



## Senate of Canada Building • Ottawa, Ontario, Canada

### Architects

Diamond Schmitt Architects  
Toronto, Ontario, Canada

KWC Architects, Inc.  
Ottawa, Ontario, Canada

### Terrazzo Contractor

Franklin Terrazzo Company  
Chatham, Ontario, Canada

### General Contractor

P.C.L. Construction Canada  
Ottawa, Ontario, Canada

### Owner

Public Works and Government  
Services Canada  
Ottawa, Ontario, Canada

### Resin Supplier

Terrazzo & Marble Supply Companies

### Aggregate Supplier

Terrazzo & Marble Supply Companies

### Precast Supplier

Franklin Precast Company

### Divider Strip Supplier

Terrazzo & Marble Supply Companies

### Photographers

Dieter Janssen  
Tom Arban

In this striking, ingenious example of in-situ recycling, heritage marble was repurposed to complement the aesthetic of a 1909 former railway station. The existing floors, baseboards, wainscoting, and stairs in Missisquoi Grey Marble, a compact local stone, were salvaged and cut into two-by-one-and-a-half-inch slabs in random lengths from 10 to 30 inches. Left with irregular edges for hand-crafted charm, the marble bars were then set in a grid in the floor. An epoxy terrazzo mixture was poured around them to complete the installation and the floor was ground to an 800-grit finish.



## Boston Children's Hospital – Hale Family Clinical Building • Boston, MA

When additional capacity for patient care came at the cost of an old Dawn Redwood tree outside, this biophilic floor design with 17 epoxy terrazzo colors memorialized the tree. Bringing nature into the energizing space, abstract representations of the tree are built harmoniously into the floor and framed with natural-edge benches hewed out of its wood. Many of the zinc divider strips were bent on-site; the gleaming tapered heavy strips were waterjet-cut. The most intricate sections of the design were installed over radiant heat, with control joints curving seamlessly into the pattern.

**Architect**  
Shepley Bulfinch  
Boston, MA

**Designer/Artist**  
Mikyong Kim Design  
Boston, MA

**Terrazzo Contractor**  
DePaoli Mosaic Company  
Canton, MA

**General Contractor**  
Suffolk Construction  
Boston, MA

**Owner**  
The Children's Hospital Corporation  
Boston, MA

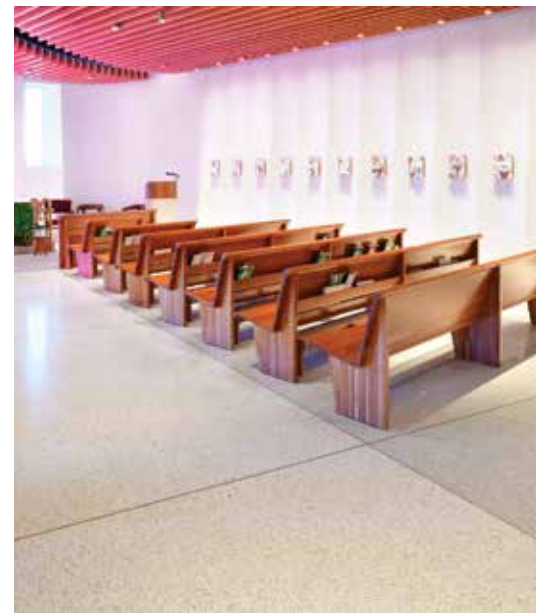
**Resin Supplier**  
Key Resin Company

**Aggregate Suppliers**  
Arim-Inc.  
Terrazzo & Marble Supply Companies

**Precast Supplier**  
Precast Terrazzo Enterprises

**Divider Strip Suppliers**  
Creative Edge  
Manhattan American Terrazzo Strip Co.

**Photographer**  
Mikyong Kim Design  
Robert Benson Photography



## Trinity Health Livonia SW Addition Chapel • Livonia, MI

### Architect

Hobbs & Black Associates  
Ann Arbor, MI

### Terrazzo Contractor

Michielutti Bros.  
Eastpointe, MI

### General Contractor

Granger Construction Company  
Lansing, MI

### Owner

Trinity Health Livonia  
Livonia, MI

### Resin Supplier

Terrazzo & Marble Supply Companies

### Aggregate Supplier

Terrazzo & Marble Supply Companies

### Divider Strip Supplier

National Metal Shapes

### Photographer

David Laudadio

This interfaith chapel is an asset to the facility's high-traffic environment and upgrades the experience for visitors and patients. Less is more in the welcoming, restful space. The cohesive design captures serenity in complementary finishes and the calming motion of the textured surfaces. Brass curves are anchored to one point in the epoxy terrazzo floor, with no joints to detract from the graceful flow. This durable, low-maintenance finish intersects a terrazzo blend of 80-percent glass aggregate enhanced with freshwater mother-of-pearl with a subtly contrasting 100-percent marble blend.





## “Judges Choice” Craftsmanship • Museum of Science & Industry Food Court • Chicago, IL

Housed in the former Palace of Fine Arts from the 1893 Chicago World’s Fair, this magnificent epoxy terrazzo installation continues a tradition of well-preserved original terrazzo in the museum’s oldest sections. The remodeled interior’s striking fusion of materials creatively showcases exacting artisanship while delivering optimal ease of maintenance and durability in a high-traffic area. Terrazzo, the focal point of the remodel, was troweled and hand-ground on ceilings, walls, and columns. Brass inserts from the existing terrazzo were repurposed in the new floor, and heavy waterjet-cut aluminum strips curved to reflect the ceiling soffits.

### Architect

Aria Group Architects, Inc.  
Oak Park, IL

### Terrazzo Contractor

John Caretti & Company  
Morton Grove, IL

### General Contractor

41 North Contractors, LLC  
Lisle, IL

### Owner

Museum of Science & Industry  
Chicago, IL

### Resin Supplier

Terroxy Resin Systems

### Aggregate Supplier

Terrazzo & Marble Supply Companies

### Divider Strip Supplier

National Metal Shapes

### Photographer

David Laudadio



## Wareham Elementary School • Wareham, MA

This new elementary school is designed to help students learn and teachers teach. While epoxy terrazzo was specified for its longevity and cost-effective maintenance, the school's interior design focused on its unlimited graphic capabilities. Imagery in the floors reinforces learning areas and guides traffic flow while honoring community spirit in 15 cheerful colors representing local natural resources. Along with a map of the town and a compass, learning tools in terrazzo include a color wheel, a variety of triangles, the golden ratio, and a model of the solar system with planets and moons.

### Architect

Mount Vernon Group  
Wakefield, MA

### Terrazzo Contractor

Joseph Cohn & Son  
North Haven, CT

### General Contractor

Agostini Bacon Construction  
Rumford, RI

### Owner

Town of Wareham  
Wareham, MA

### Resin Supplier

Key Resin Company

### Aggregate Supplier

Arim-Inc.

### Precast Supplier

Precast Terrazzo Enterprises

### Divider Strip Supplier

Manhattan American Terrazzo Strip Co.

### Photographers

Brett Beyer  
Mount Vernon Group



## Detroit City Club Apartments CBD • Detroit, MI

**Architect**  
BKV Group  
Chicago, IL

**Terrazzo Contractor**  
Artisan Tile  
Brighton, MI

**General Contractor**  
Wolverine Building Group  
Kentwood, MI

**Owner**  
City Club Apartments  
Chicago, IL

**Resin Supplier**  
Terrazzo & Marble Supply Companies

**Aggregate Supplier**  
Terrazzo & Marble Supply Companies

**Divider Strip Suppliers**  
Creative Edge  
National Metal Shapes

**Photographers**  
Alan Blakely Architectural Photography  
Artisan Tile

This splendid terrazzo floor with its layers, patterns, textures, and colors is a hallmark of the brand aesthetic of this new apartment complex recognized for its architecture, design, sustainability, and amenities. In the Grand Circus Park district of historic downtown Detroit, the classic early 20th-century Art Deco-style interior honors the building's legacy as the site of the iconic 1915 Statler Hotel. A highly durable finish with low-maintenance practicality, the intricately orchestrated terrazzo layout in black and white with a floral overlay artfully combines epoxy terrazzo with marble, mirror, and glass chips.



## “Judges Choice” International • Neoclinique • Bucharest, Romania, Europe

### Architect

Twins Design  
Bucharest, Romania, Europe

### Terrazzo Contractor

Aragon - Romania  
Bucharest, Romania, Europe

### General Contractor

Twins Design  
Bucharest, Romania, Europe

### Owner

Neoclinique  
Bucharest, Romania, Europe

### Photographer

Cristian Vasile (IGU)

This stylish installation at a new high-end dental clinic is a technical achievement in terrazzo. Complemented by textured carpet stone walls and an undulating ceiling, terrazzo and brass detailing cohere in one flowing, modern design. The curving 22-and-a-half-foot desk in the lobby is clad in precast epoxy terrazzo to precisely match the floor. It was completed in three modules to appear to be one solid block of terrazzo. A mix of Italian marble chips in sizes zero to three was specified, with added mother-of-pearl in the perimeter strip between the brass lines.



## “Judges Choice” Art • Bill and Hillary Clinton National Airport • Little Rock, AR

Moving through the pre-security lobby, a landscape unfolds on the floor beneath travelers, inviting exploration. A glorious celebration of the state’s natural beauty, this public art depicts 16 native insects, 12 plants, and a pair of mockingbirds, all centered on a compass plant, in 50 epoxy terrazzo colors and 50 different mixes of aggregate, with mother-of-pearl and recycled glass for texture. Pattern elements in “Over an Arkansas Sky”—a tribute to state poet laureate Jo McDougall—range from spots no bigger than a dime on butterfly wings to five square feet.

**Architect**  
Alliance  
Minneapolis, MN

**Artist**  
Tiffany Black  
Brooklyn, NY

**Terrazzo Contractor**  
Missouri Terrazzo  
St. Louis, MO

**General Contractor**  
Flynco, Inc.  
Little Rock, AR

**Owner**  
City of Little Rock  
Little Rock, AR

**Resin Supplier**  
Terrazzo & Marble Supply Companies

**Aggregate Supplier**  
Terrazzo & Marble Supply Companies

**Divider Strip Supplier**  
Creative Edge

**Photographer**  
David Laudadio

# 100 years of the National Terrazzo and Mosaic Association

The first terrazzo floors in the US were laid in the 1890s by Italian mosaic workers, marking the beginning of the transfer of the terrazzo industry to our shores. In the 1920s, the American terrazzo industry truly took off when architects discovered terrazzo's design potential for Art Deco designs. Electric grinding machines and divider strips added to the momentum. With the growing terrazzo industry came the need for a trade organization to support the contractors for a sustainable future.

In 1923, Costante Cassini originally from Cavasso Nuovo in Friuli formed a vision for that organization. He invited 27 terrazzo and mosaic contractors from around the nation to meet in Chicago at the historic La Salle Hotel downtown, creating the National Terrazzo and Mosaic Contractors Association.

By 1926, 60 contractor firms had joined the association with 40 of those being owned by Italians or Italian-Americans. The early membership rolls of the NTMA track the expansion of this exceptional trade across



the nation. In 1929, supplier members joined the organization and the name changed to the National Terrazzo and Mosaic Association.

The subsequent years saw the second generation of many family-owned companies taking the helm. Today we see some fifth and even sixth generations involved in carrying on this trade; a

distinctive aspect of this group.

One hundred years later, the NTMA is 112 contractor members and 37 supplier members strong. Remarkably, 27 current member companies have been NTMA members for over 75 years.

A century ago, this association was established on the vision of our founders and their realization that this trade was an exceptional one; an industry built on expertise, integrity, ingenuity, and cooperation. Today, the NTMA celebrates the enduring, beautifully visible legacy sustained in every terrazzo job as we prepare for the next 100 years.

*The first convention of the NTMA in 1924*





Left: 1926 Convention  
Above: 1948 Convention  
Below: 1935 Convention



Left: 1963 Convention    Right: 1947 Convention    Bottom: 1954 Convention





THE NATIONAL  
**TERRAZZO**  
& MOSAIC ASSOCIATION

**CELEBRATING 100 YEARS**